



Hot Air System

Model HB-700

- Precision hot air delivery
- Heat fuses, shapes and shrinks
- Accurate temperature control
- Consistent results
- Cost effective
- Safety interlocks
- User Friendly
- Customized nozzles
- Modular design
- Optional Tipping and Fuse Welding attachments



GENERAL INFORMATION

Interface Associates' **Hot Air System** (figure 1) is a compact, bench-top system designed to provide a precisely controlled stream of hot air. Different shapes and sizes of air nozzles are available to deliver a focused jet of temperature controlled air to a desired spot. The most often encountered applications for this device are heat fusing, heat shrinking, and shaping operations performed during the catheter manufacturing process.

The HB-700 allows for the precise setting of air temperature and air flow. To achieve the most accurate temperature reading, a miniature thermocouple is installed in the air stream, 1 millimeter from the nozzle exit.

Optional “bolt-on” attachments are available for catheter tipping and conversion bond (Rx bond) fuse-welding, e.g., fuse-welding proximal-to-distal shafts and fusing the distal shaft/inner lumen junction, shaping the balloon neck-to-shaft transition, etc. These devices substantially increase the utility and production yields achieved with the Hot Air System.

OPERATION

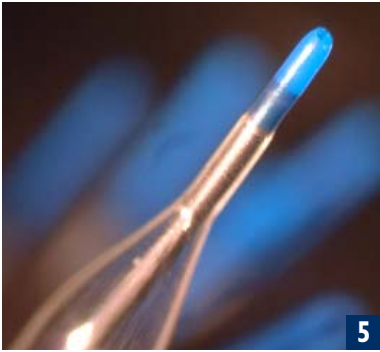
The system is user friendly and requires minimal set-up time. After adjusting the pressure regulator, the desired air flow and temperature are set on the front panel. Once parameters are set, the current to the hot air nozzle is activated and the air temperature rises. The ball joint mounted hot air tube allows the user to position the nozzle outlet at a precise height and angle as required by a particular job; this is especially useful for steadying your hands against the desk top or when working under a microscope. Safety interlocks are provided between the electrical and pneumatic system to prevent heater burnout during accidental loss of air pressure.

OPTIONAL TIPPING ATTACHMENT (figure 2)

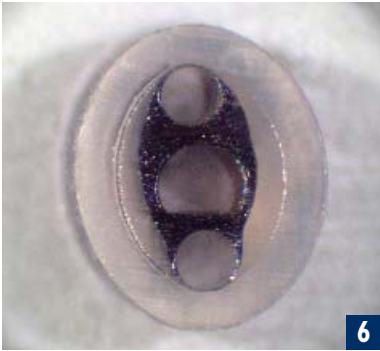
In conjunction with the Hot Air System, the Tipping Attachment offers an efficient and cost effective way to form tips on delicate, very small diameter tubing, as used on PTCA inner member. The Tipping Attachment consists of two modules, the Timer Controller (figure 4) and a Catheter Positioning Module (figure 2). See figure 5 for a tipping sample.

OPTIONAL FUSE WELDING MODULE (figure 3)

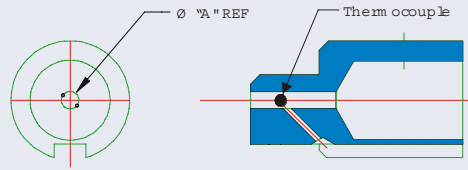
The Fuse Welding Module offers an efficient and cost effective way to perform conversion bonds (guide-wire entry fuse-welds) on PTCA catheters. The Fuse Welding Module consists of two devices; the Timer Controller (figure 4) and a Catheter Positioning Module (figure 3). See figure 6 for a fuse welding sample.



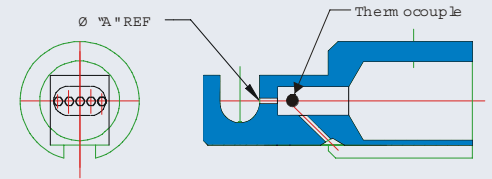
5



6



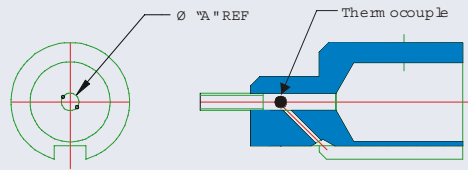
TYPE 1 - STRAIGHT JET



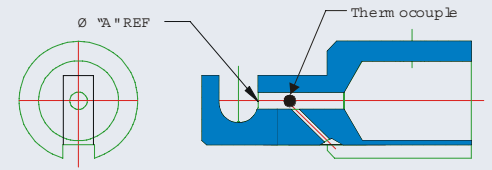
TYPE 3 - "U" CHANNEL, WIDE

REPLACEMENT NOZZLES FOR HOT BOX

| | | | |
|----------------------|---------|--------|---------|
| -04 | Ø 0.067 | -08 | Ø 0.125 |
| -03 | Ø 0.055 | -07 | Ø 0.110 |
| -02 | Ø 0.045 | -06 | Ø 0.093 |
| -01 | Ø 0.035 | -05 | Ø 0.076 |
| DASH # | D M A | DASH # | D M A |
| DASH CHART FOR D M A | | | |



TYPE 2 - STRAIGHT JET, EXTENDED



TYPE 4 - "U" CHANNEL, NARROW

SPECIFICATIONS

| | |
|-------------------------|--|
| Dimensions: | 9.0" H x 10.25" W x 14.0" D |
| Weight: | 8 lbs |
| Power Requirements: | 115V and 220V models available |
| Heating Power: | Variable, 150 to 650W |
| Temperature Controller: | 0.1% of span, 0.1F resolution, 0 - 700F (0 - 371C) |
| Nozzles Available: | Straight Jet, Straight Jet Extended, "U" Channel Wide, and "U" Channel Narrow |



27752 El Lazo Road • Laguna Niguel, CA 92677 • Phone: 949.448.7056 • Fax: 949.448.7016

www.interfaceusa.com • info@interfaceusa.com